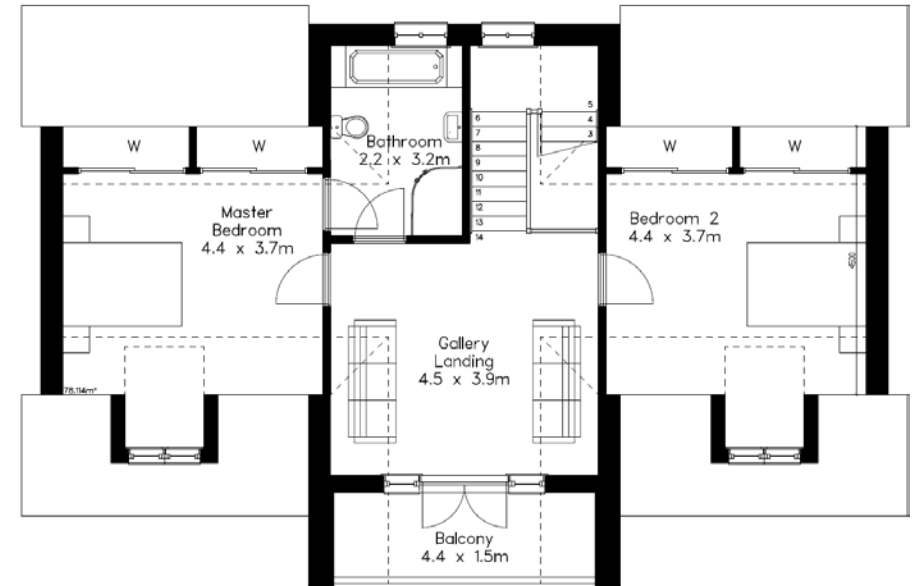
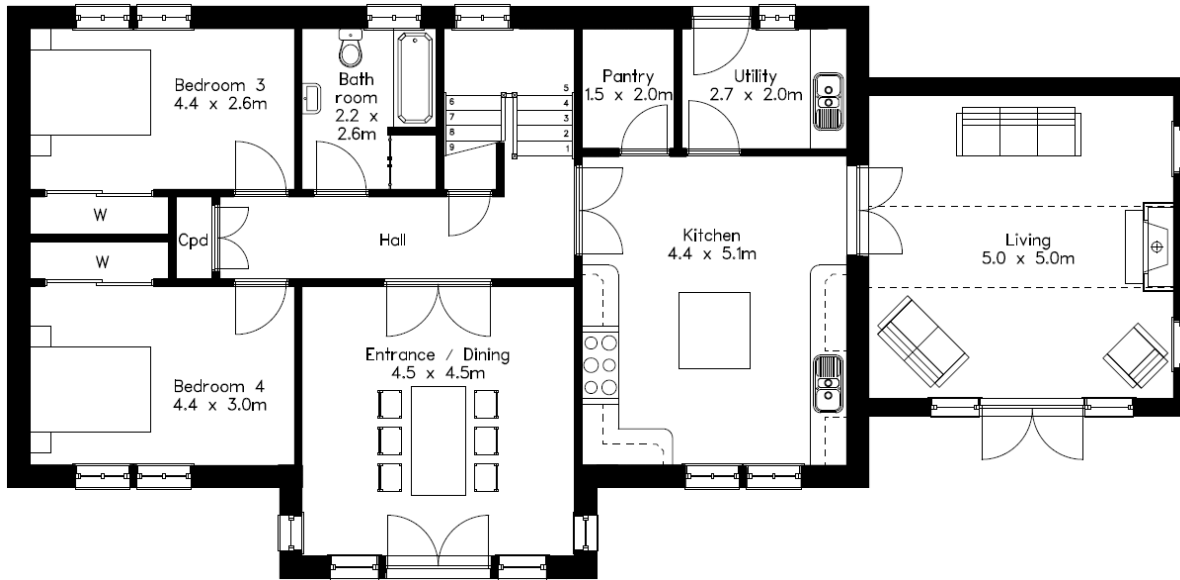


CRAIGEND | Floor Area 210m² | Frontage 20m



CRAIGEND



Ground Floor

- Lounge 5.0m x 5.0m
- Bathroom 2.7m x 2.5m
- Dining 4.5m x 4.5
- Kitchen 4.4m x 5.1m
- Pantry 1.5m x 2.0m
- Utility 2.7m x 2.0m
- Bedroom 3 3.9m x 3.0m
- Bedroom 4 3.5m x 3.0m

First Floor

- Master Bedroom 4.4m x 3.7m
- Gallery Landing 4.5m x 3.9m
- Balcony 4.4m x 1.5m
- Bedroom 2 4.4m x 3.7m
- Bathroom 2.2m x 3.2m